



**FORKLIFT\_**  
**SIMULATOR**

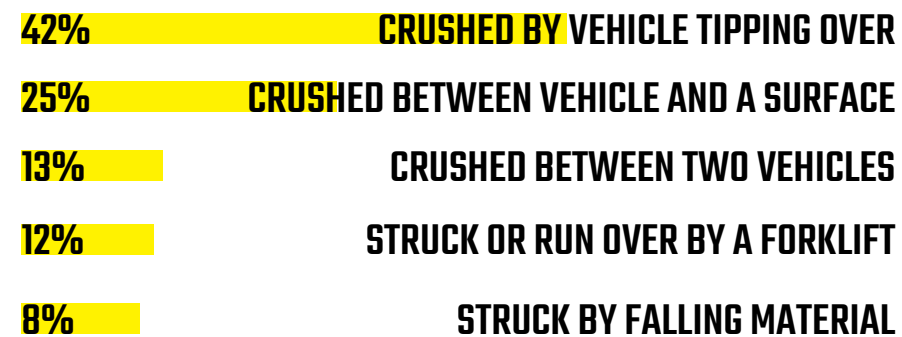
**DRIVER TRAINING**

**SAFETY AWARENESS**

**PRODUCTIVITY GAINS**

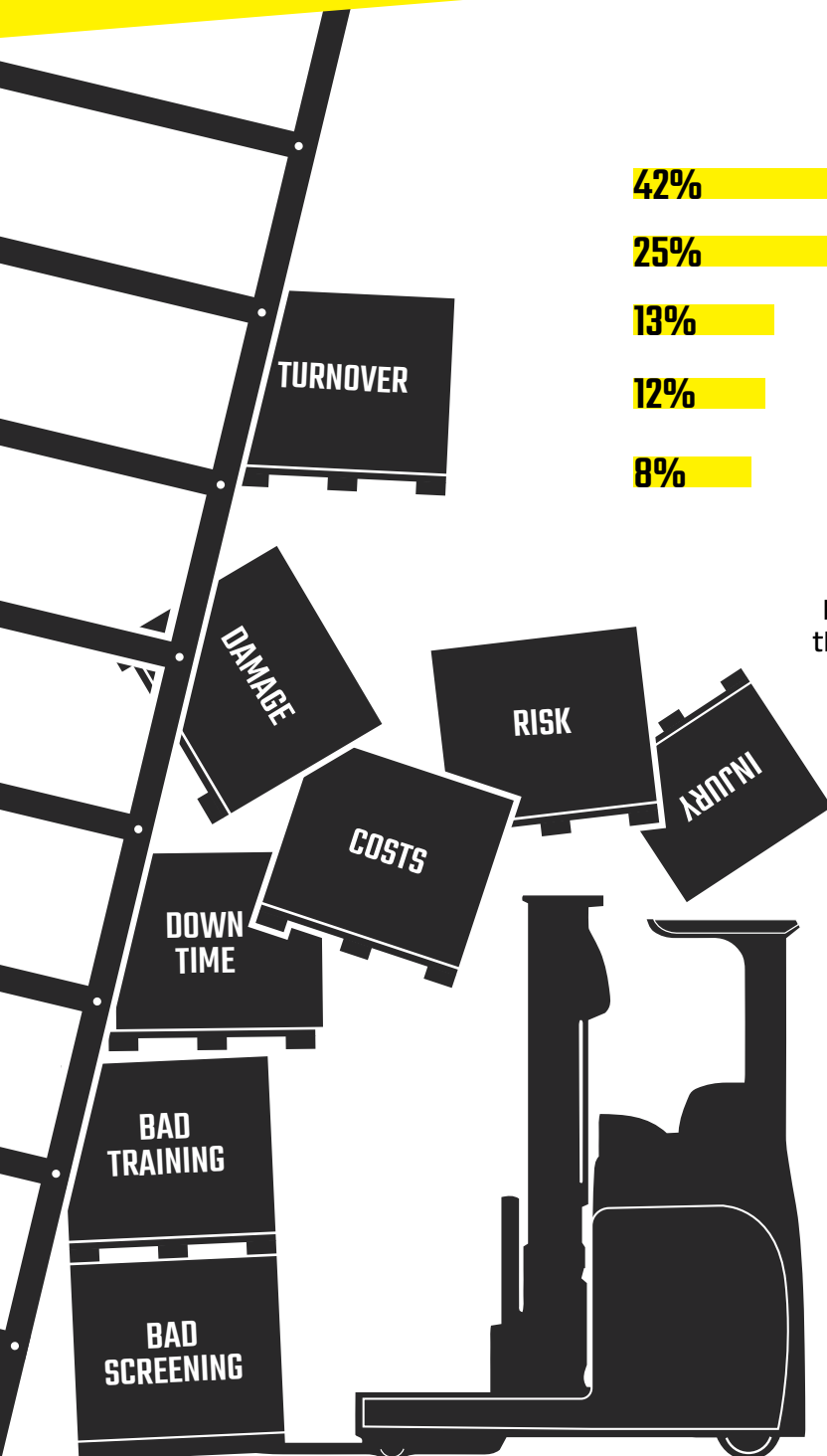
FLS-SUM-001 // PRODUCT SHEET

# 70% OF ALL FORKLIFT ACCIDENTS COULD BE AVOIDED WITH PROPER TRAINING AND SCREENING



Forklifts still cause many accidents and damage on the work floor. Today's logistics environment is fast paced and leaves little room for error.

Repetitive practice of common incident situations will increase skills and safety awareness resulting in less damage.



# BENEFITS OF TRAINING IN VIRTUAL REALITY

The use of simulators as a training tool is well known. The Army and Flight schools have adopted this technology as a way of teaching the next generation of pilots and operators of various specialized equipment.

Virtual Reality adds an extra dimension to simulator training, immersing the user in a realistic and challenging environment. Objective data enables the trainer to evaluate results and accurately adjust individual training programs.

So what are the main advantages of virtual reality training?

- Little/no risk in a safe and controlled area
- Realistic scenarios
- Can be done remotely saving time and money
- Improves retention and recall
- Simplifies complex problems/situations
- Suitable for different learning styles
- Training is easier if the experience is pleasant or enjoyable which means higher level of engagement and understanding.

Time and money are also important factors. Training is necessary to ensure that people are able to perform their jobs or learn a subject in order to be fully productive. But the costs can be prohibitive.

Virtual Reality training is:

**THE EASIEST, SAFEST AND MOST EFFECTIVE WAY TO SCREEN, TRAIN AND MOTIVATE**

## SOURCES

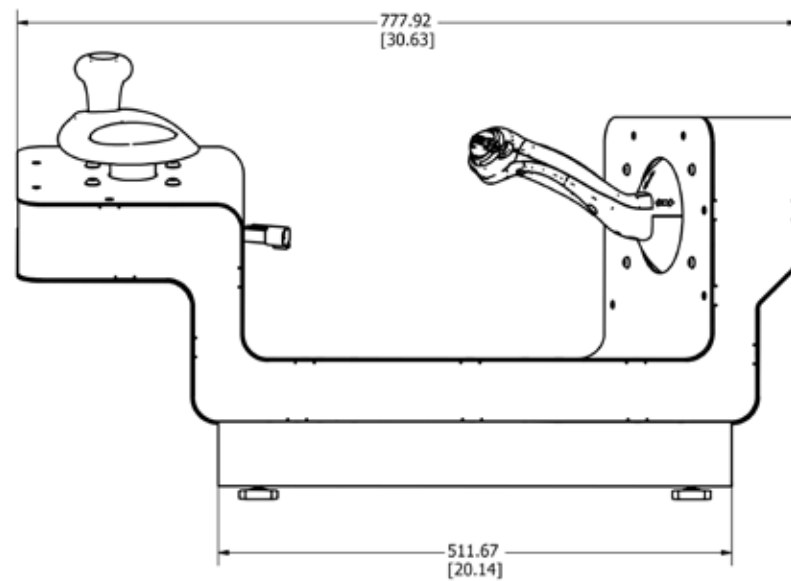
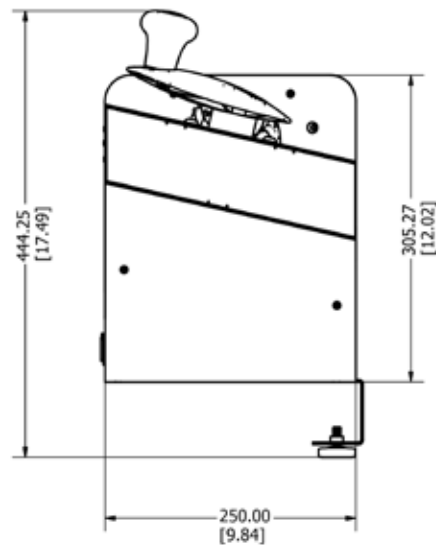
OSHA - [www.osha.gov](http://www.osha.gov)  
Industrial Truck Association - [www.indtrk.org](http://www.indtrk.org)

# FLS-SUM-001

THE 360° SOLUTION FOR DRIVER TRAINING, SCREENING, SAFETY AND PRODUCTIVITY



Stand Up  
Reach Truck-Simulator



## HARDWARE

**DIMENSIONS & WEIGHT**  
(in transport case)

33.70 in x 28.54 in x 13.38 in (L/W/H)

856mm x 725mm x 416mm (L/W/H)

Weight: 110 Lbs / 50 Kg

**CONTROLS**  
Genuine OEM Controls

**VR & COMPUTING**  
Oculus VR Headset  
MSI VR-Ready laptop  
nVidia RTX 2070 GPU  
8Gb RAM, 250Gb SSD HD



Using the Oculus S Headset

Our Forklift-Simulators are designed for and ship with the renowned Oculus VR headset. Top technology for a realistic and immersive experience.

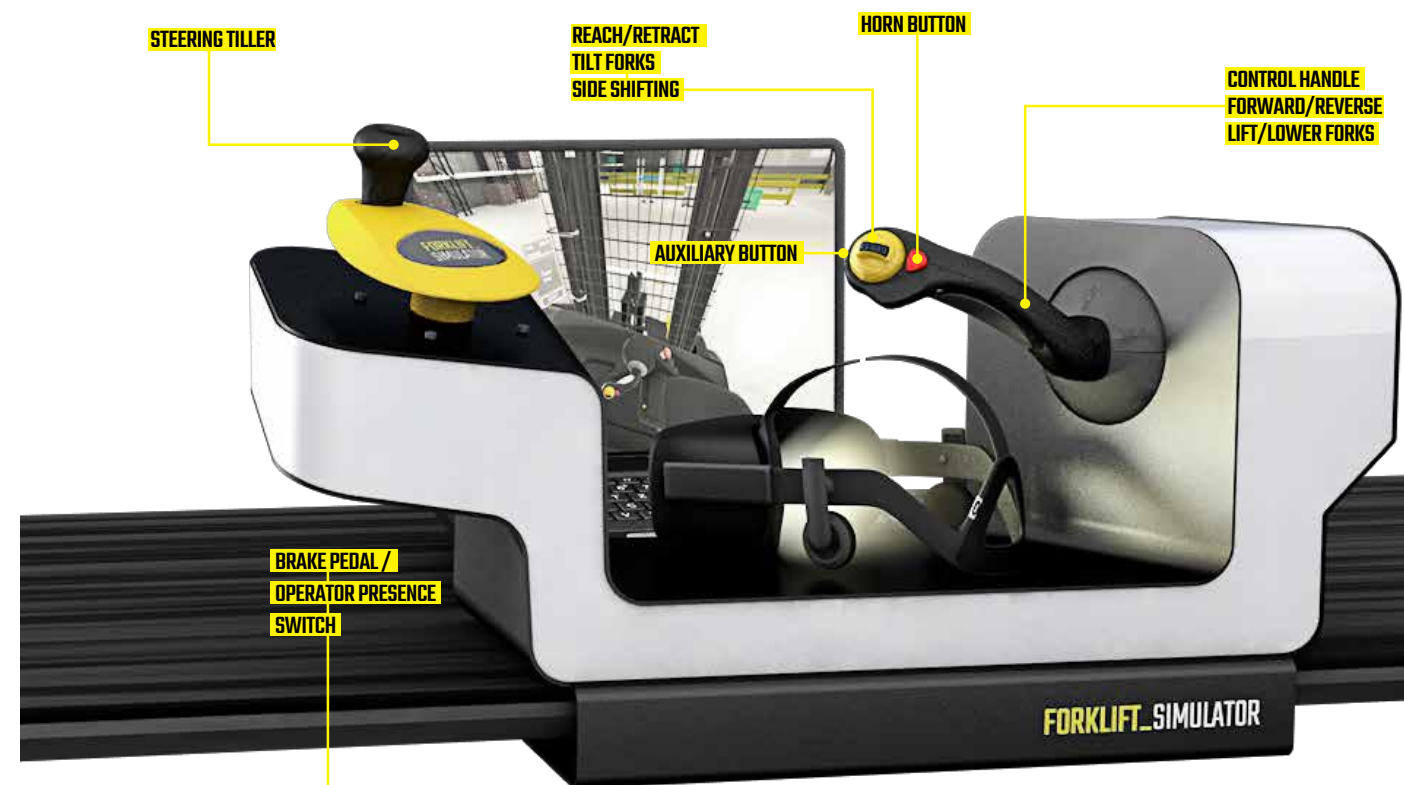
## PACKAGING

The desktop simulator is shipped in a military grade transport case. It has 4 inline-skate wheels for easy transportation, padlock holes and a foam interior to keep it safe during transport or storage.

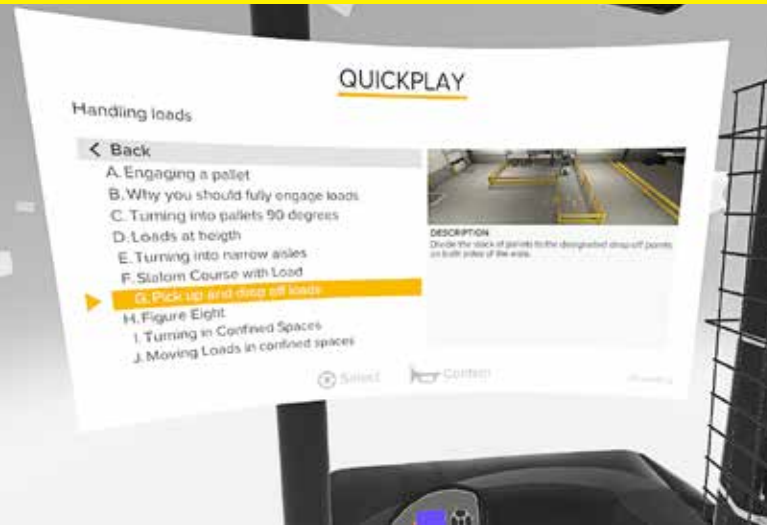


## WARRANTY

A 1 year hardware warranty is included in the purchase and can be optionally extended each year.







# SOFTWARE CONTENT

## FLS-CON-009

STANDARD STAND UP  
REACH TRUCK CURRICULUM

For use with  
**FLS-SUM-001**  
Stand Up Reach Truck-Simulator

1. CONTROLS
Introduction to the Reach Truck Controls
Driving - Forward / reverse
Plugging to a stop
Using the foot brake
2. DRIVING
Steering - Forward direction
Steering - Reverse
Pivot point - Forward
Pivot point - Reverse
3. HANDLING LOADS
Engaging a pallet
Why you should fully engage loads
Turning into pallets 90 degrees
Loads at height
Turning into narrow aisles
Stalom Course with Load
Pick up and drop off loads
Figure Eight
Turning in Confined Spaces
Moving Loads in confined spaces
4. ADVANCED EXERCISES
Traffic and pedestrians
Slippery Surfaces
Emergency Stop
Skill Test
Exam

## 4 LEVELS

### 23 EXERCISES

The default Curriculum exists out of 4 levels containing 23 exercises in total. Start with the basics and move your way up to more challenging and complex exercises. The curriculum is based on OSHA guidelines and world leading Reach Truck Courses.

## SITUATIONS

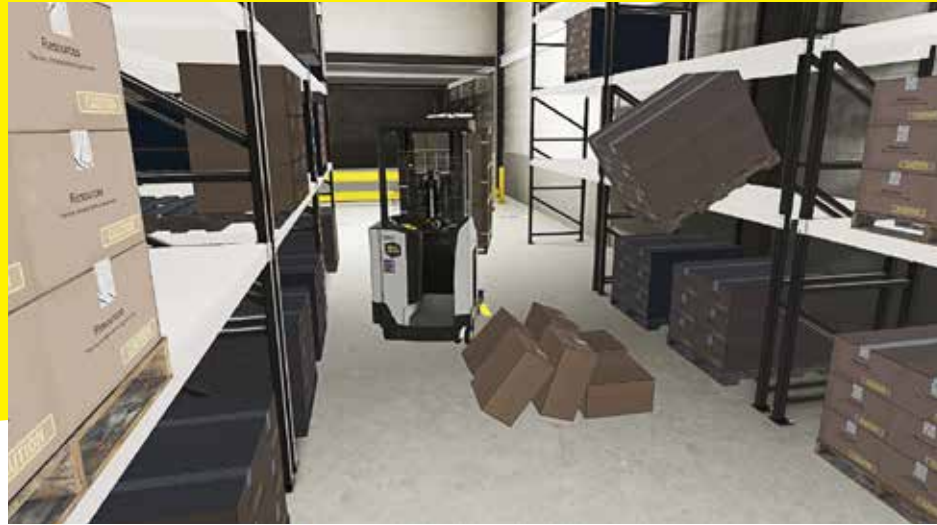
Various operational objectives, environments and safety situations



Clear Objectives  
Different Environments

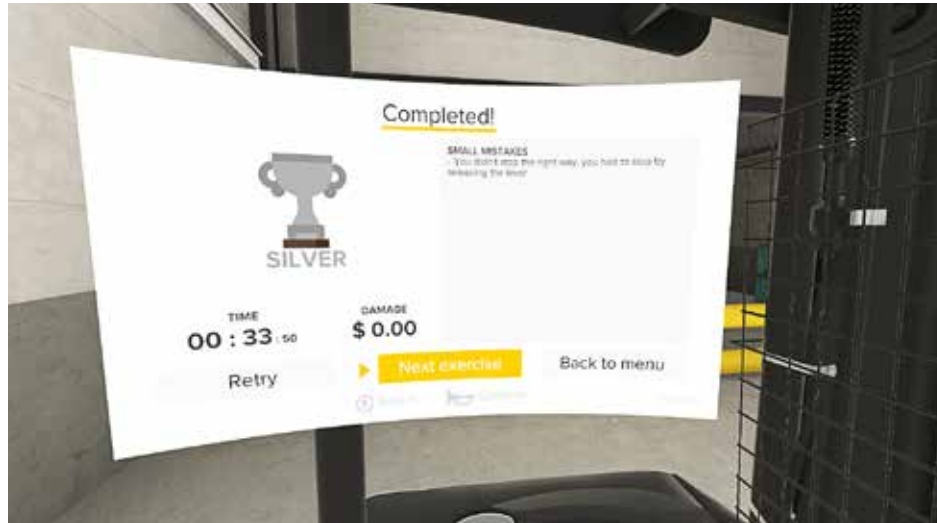


Different surfaces  
and conditions



## TRACKING

Common mistakes and attention points are tracked for review

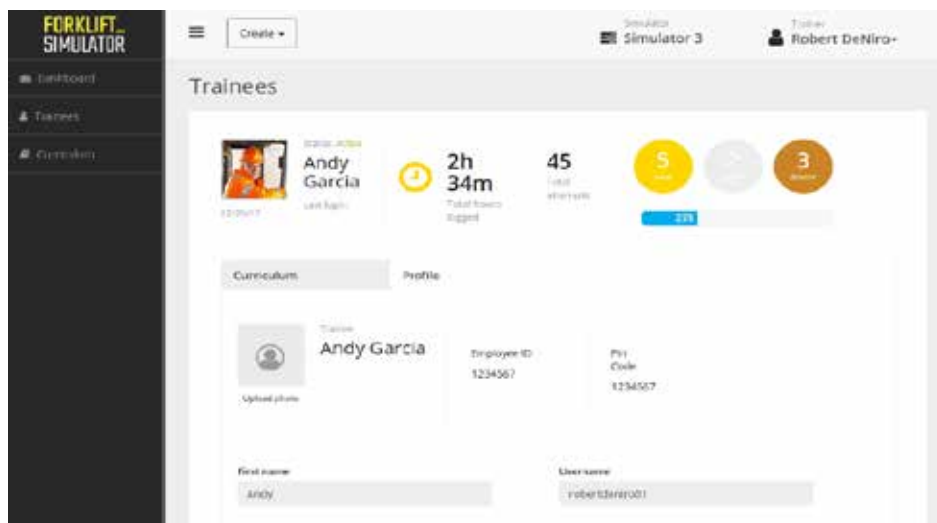


## SCORING

Objective Bronze, Silver and Gold scoring

## LICENSE PRICING

A 1 year software license is included in the purchase price of the simulator. The license includes service, support and upgrades. You will still be able to use your simulator without a license but will not receive the benefits of quick support or new and/or improved exercises and functionalities.



## LEARNING MANAGEMENT

Using the learning Management System, a trainer can review the progress and results of each trainee.



## REMOTE SUPPORT

Although the units will function off-line, we strongly recommend to put your simulator(s) on-line using a LAN or Wireless connection. (LAN recommended)

Having your unit connected will enable us to service and update the units remotely. It will also allow you to use the Learning Management System to the fullest.





## OPTIONS



## ADVANCED LEARNING MANAGEMENT SYSTEM

- User Management
- Content assignment and management
- Tracking and Reporting for Enhanced Performance
- Immediate Capabilities Evaluation

Our advanced LMS makes it all possible. All from the convenience of your own desk.

### CUSTOM ENVIRONMENTS

Some environments are very specific. We can recreate your work floor and specific loads on request.

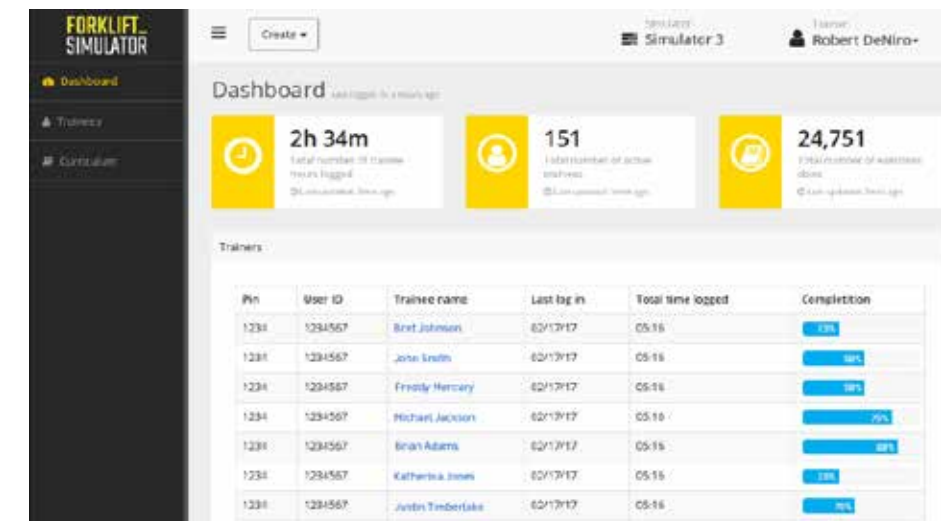
### FORK ATTACHMENTS

Trucks can be different depending on the task. A variety of fork attachments are available as well as specialized exercises.



### USER MANAGEMENT

Each new user will receive a personal PIN code. Once logged in, the student will see the exercises assigned and the results of previous sessions.



### OBJECTIVE DATA TRACKING

All objective data being tracked is accessible presented in easy to read dashboards.

Individualize training programs and direct the learning curve of your students.



FL-Simulators Inc.  
4590 MacArthur Blvd.,  
Newport Beach,  
CA 92660, USA

[www.forklift-simulator.com](http://www.forklift-simulator.com)